

# EMERALD LAKES PHASE IV

BEING A REPLAT OF A PORTION OF EMERALD LAKES AS RECORDED IN PLAT BOOK 9, PAGE 22 OF THE PUBLIC RECORDS OF MARTIN COUNTY, FLORIDA.

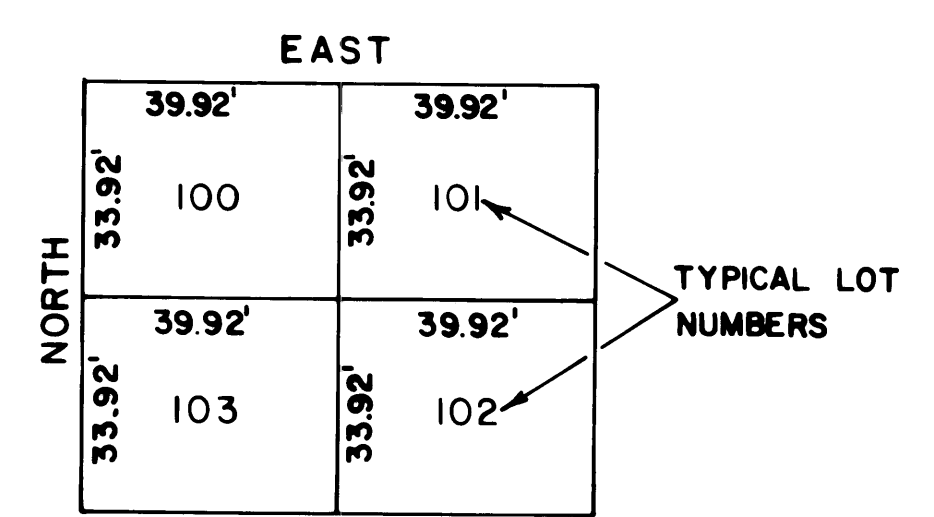
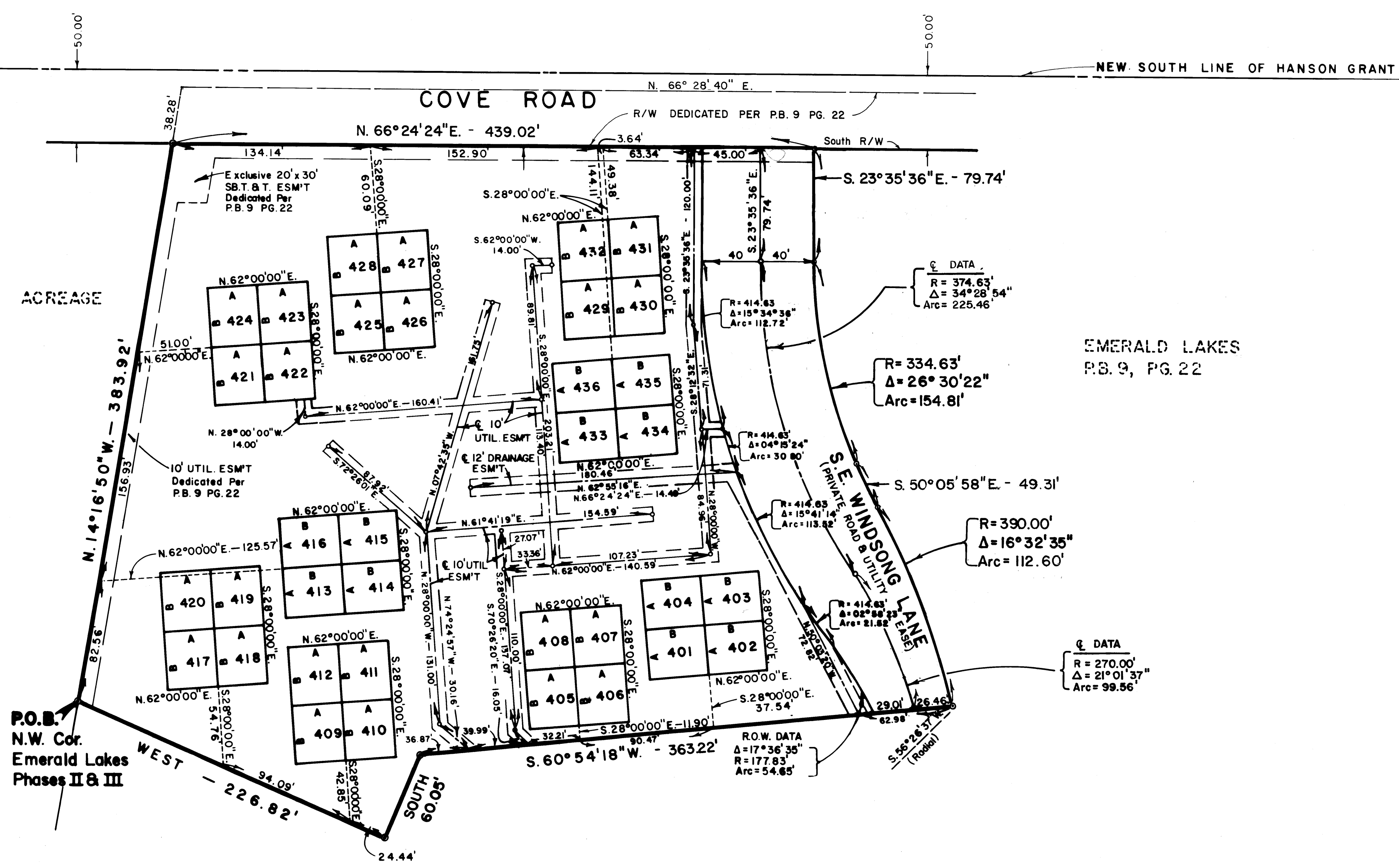
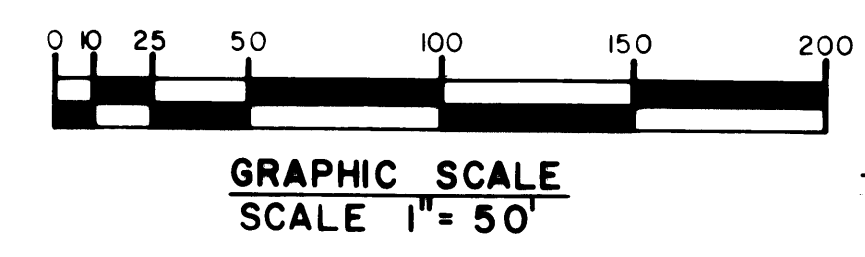
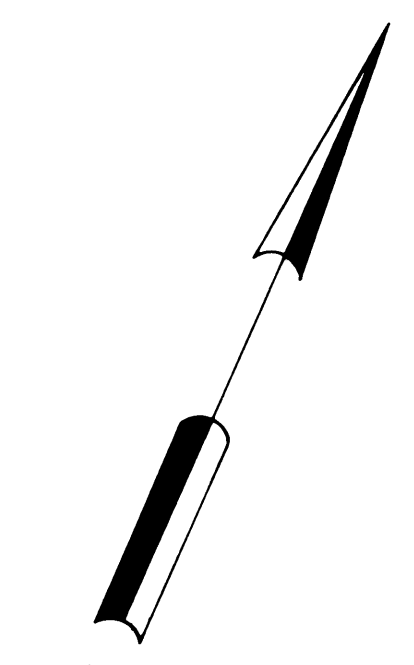
I, Louise V. Isaacs, Clerk of the Circuit Court of Martin County Florida, hereby certify that this plat was filed for record in Plat Book 9, Page 51, Martin County, Florida, Public Records this day of \_\_\_\_\_, 1983.

LOUISE V. ISAACS, CLERK  
CIRCUIT COURT  
MARTIN COUNTY, FLORIDA

BY: \_\_\_\_\_  
Deputy Clerk

File No. \_\_\_\_\_

THIS INSTRUMENT PREPARED BY:  
LEO E. NOBLE R.L.S. 3143 STATE OF FLORIDA  
**LAWSON & NOBLE, INC.**  
ENGINEERS - PLANNERS - SURVEYORS  
LAKE WORTH, FLORIDA



TYPICAL LOT LAYOUT

o Denotes Permanent Reference Monument (P.R.M.)  
o Denotes Permanent Control Point (P.C.P.)  
Bearings shown hereon refer to an assumed bearing based on the South line of Section 25, Township 38 S., Range 41 E.

"A" denotes a distance of 33.92 feet  
"B" denotes a distance of 39.92 feet

EMERALD LAKES PHASES  
II, III & III-A P.8.9 PG.45